

big / small



tall / short



quiet / noisy



fat / thin



bad / good



deep / shallow



COMPARISON SPEAKING CARDS



sweet / sour



interesting / boring



brave / cowardly



dry / wet



far / near



hungry / full



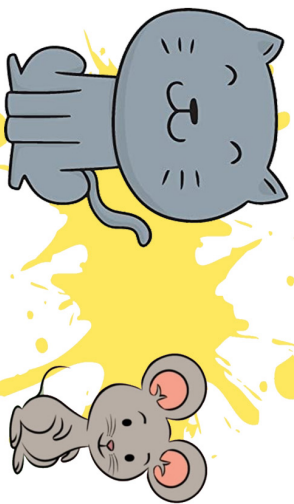
soft / hard



full / empty



old / new



big / small

Let's study



tall / short

Let's study



quiet / noisy

Let's study



slow / fast



thick / thin



straight / curly

Let's study



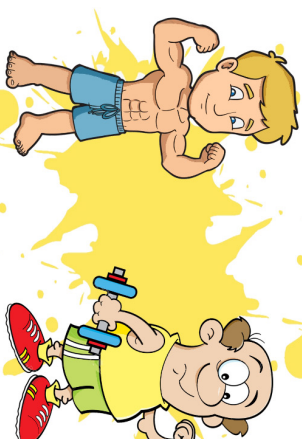
light / heavy

Let's study



beautiful / ugly

Let's study



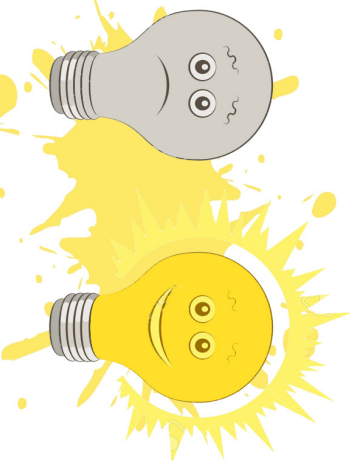
strong / weak

Let's study



Let's
study

fat / thin



dark / light

Let's
study



ancient / modern



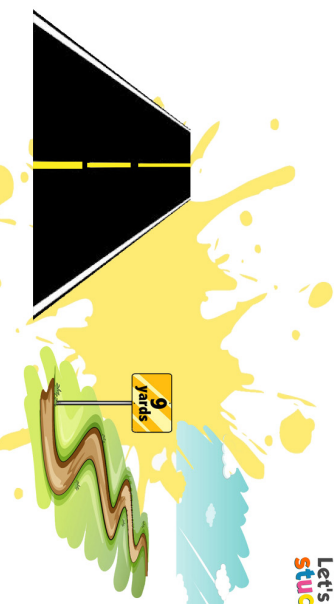
Let's
study

bad / good

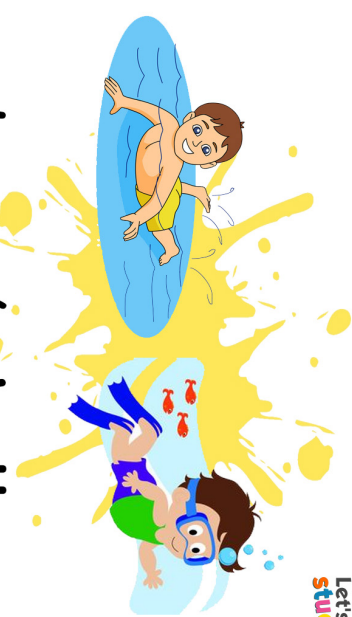


lazy /
hard-working

Let's
study

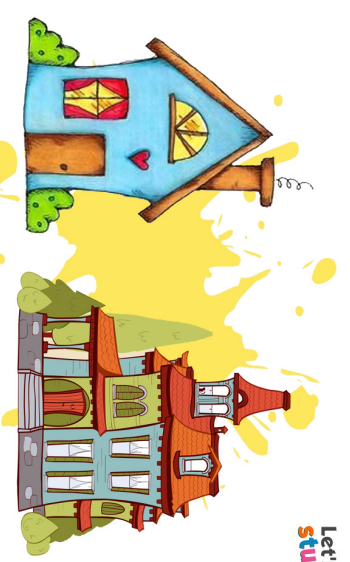


wide / narrow



Let's
study

deep / shallow



cheap / expensive

Let's
study



healthy / sick



Let's study

messy / tidy



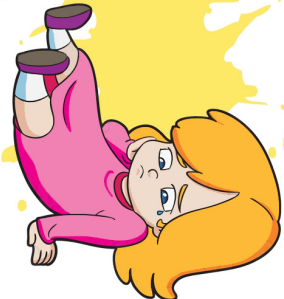
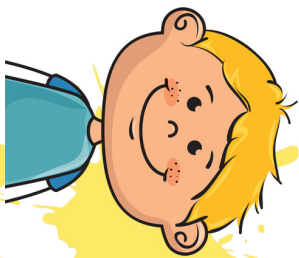
Let's study

friendly / unfriendly



Let's study

cold / hot



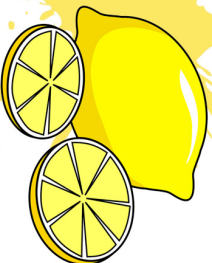
happy / sad



young / old



short / long



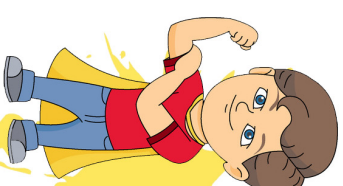
sweet / sour

Let's study



interesting / boring

Let's study



brave / cowardly

Let's study



Let's study

open / closed



dry / wet



Let's study

soft / hard

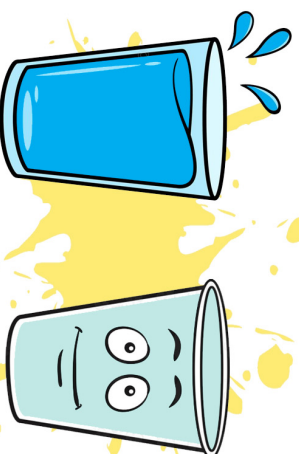


Let's study

same / different



far / near



Let's study

full / empty

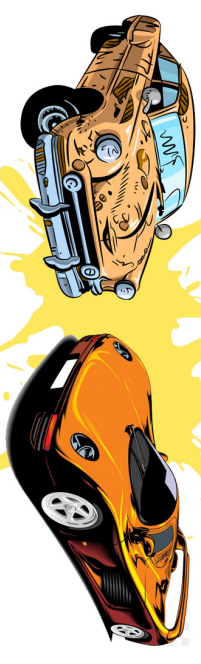


Let's study

dirty / clean



hungry / full



Let's study

old / new